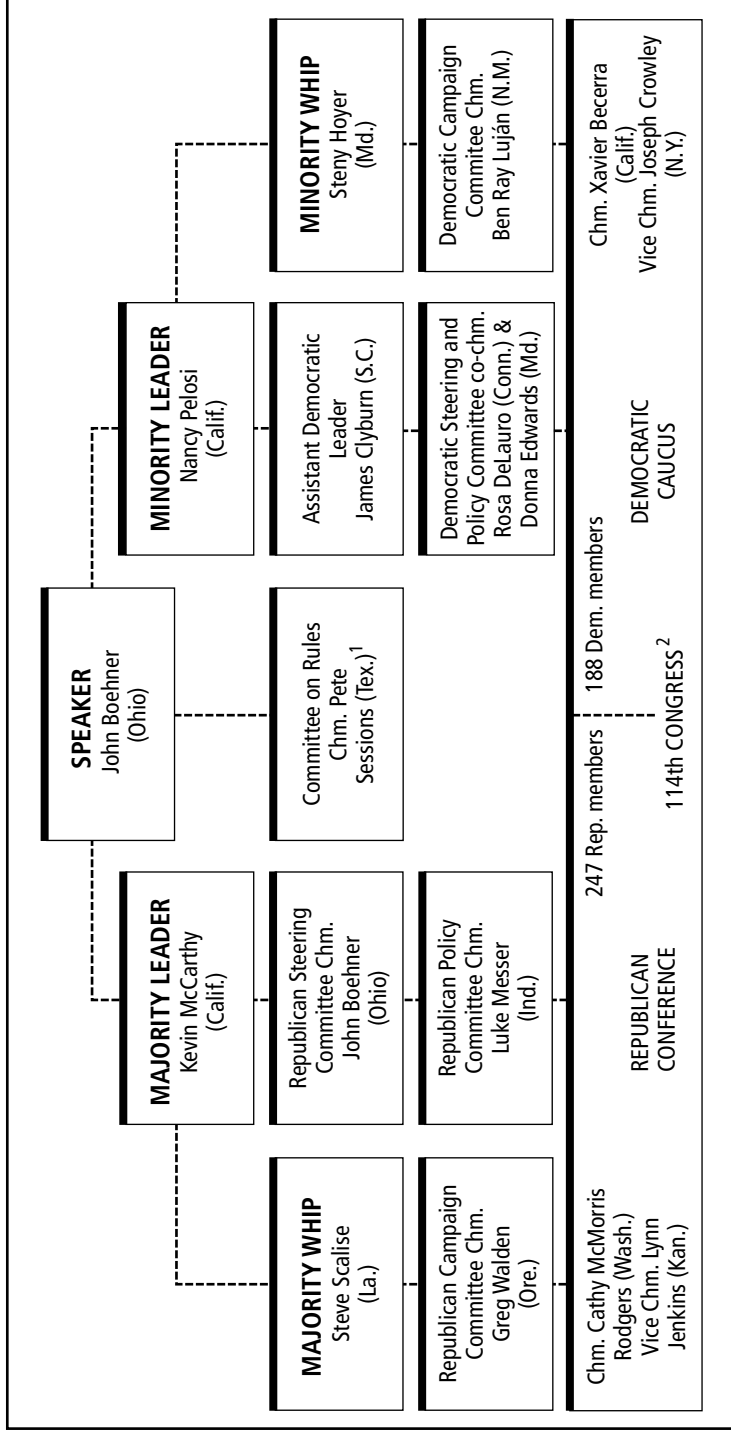


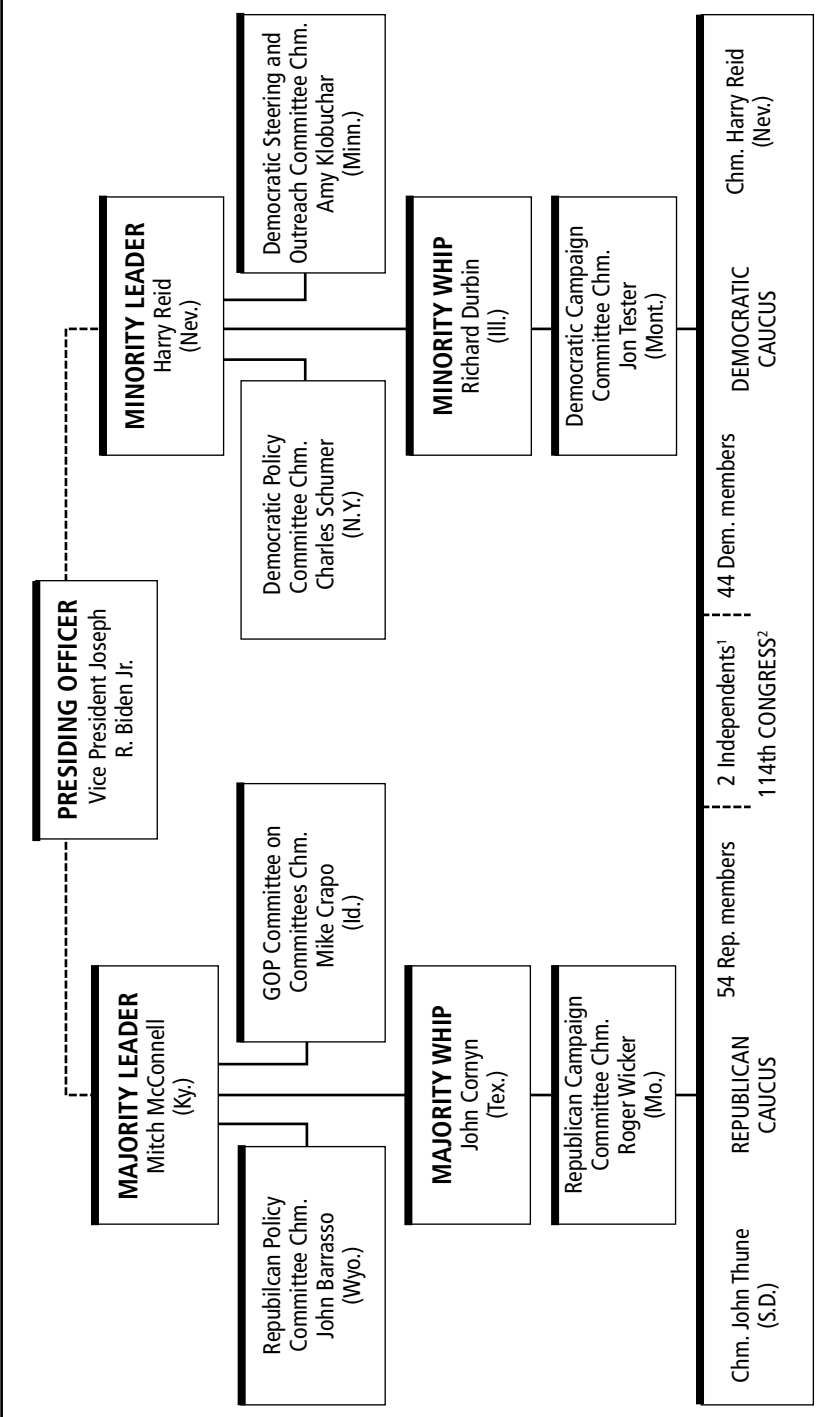
FIGURE 6-1 Organization of the House of Representatives, 114th Congress, 2015–2017



<sup>1</sup> Although not strictly a party panel, the Rules Committee in modern times functions largely as an arm of the majority leadership.

<sup>2</sup> The number of representatives as of January 2015.

FIGURE 6-2 Organization of the Senate, 114th Congress, 2015–2017



<sup>1</sup> Aligns with Democrats.

<sup>2</sup> As of January 2015.

TABLE 6-1 **Party Committees in the Senate and House**

Committee	Function
<b>Senate Democratic</b>	
Policy and Communications Center	Considers party positions on specific measures and assists the party leader in scheduling bills; facilitates communication between Senate Democrats and to external audiences
Steering and Outreach	Assigns Democrats to committees and coordinates policy, legislative, and message issues for the Democratic Conference
Campaign	Works to elect Democrats to the Senate
<b>Senate Republican</b>	
Policy	Provides summaries of GOP positions on specific issues; researches procedural and substantive issues; drafts policy alternatives
Committee on Committees	Assigns Republicans to committees
Campaign	Works to elect Republicans to the Senate
<b>House Democratic</b>	
Steering and Policy	Assists the leadership and Democratic Caucus in establishing, implementing, researching, and communicating party priorities; assigns Democrats to committees
Campaign	Works to elect Democrats to the House
<b>House Republican</b>	
Policy	Considers majority party proposals and works for consensus among Republican members
Steering	Assigns Republicans to standing committees
Campaign	Works to elect Republicans to the House

*Note:* The official names of the parties' campaign committees are as follows: Democratic Senatorial Campaign Committee, National Republican Senatorial Committee, Democratic Congressional Campaign Committee, and National Republican Congressional Committee.